

Alpha Wireless Automation Remote Tank

Wireless Remote Tank Level Monitoring and Management System

Tel: 800-249-4249 or 310-488-4249 Fax: 310-385-7811

www.RemoteTank.com

Float Monitor

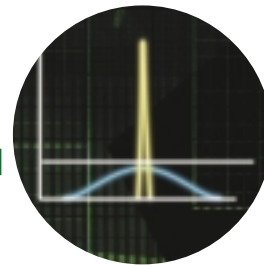
Centeron Float Monitors accurately measure tank product levels in vented vessels, and send data to a Centeron controller using robust Direct Sequence Spread Spectrum (DSSS) wireless technology. The Float Monitor is a simple, cost-effective solution for remote level measurement in small tanks from 1 to 8 ft. in height.

- Suitable for a wide variety of fluids including fuels, lubricants, waste oil, liquefied gases, water/waste water, and various chemicals
- Installs easily in minutes
- No calibration required
- Low maintenance
- Wireless communication and battery power eliminate costly electrical wiring required by traditional tank measurement systems

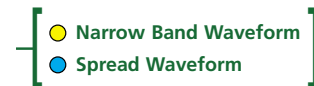
Float Monitor Specifications:

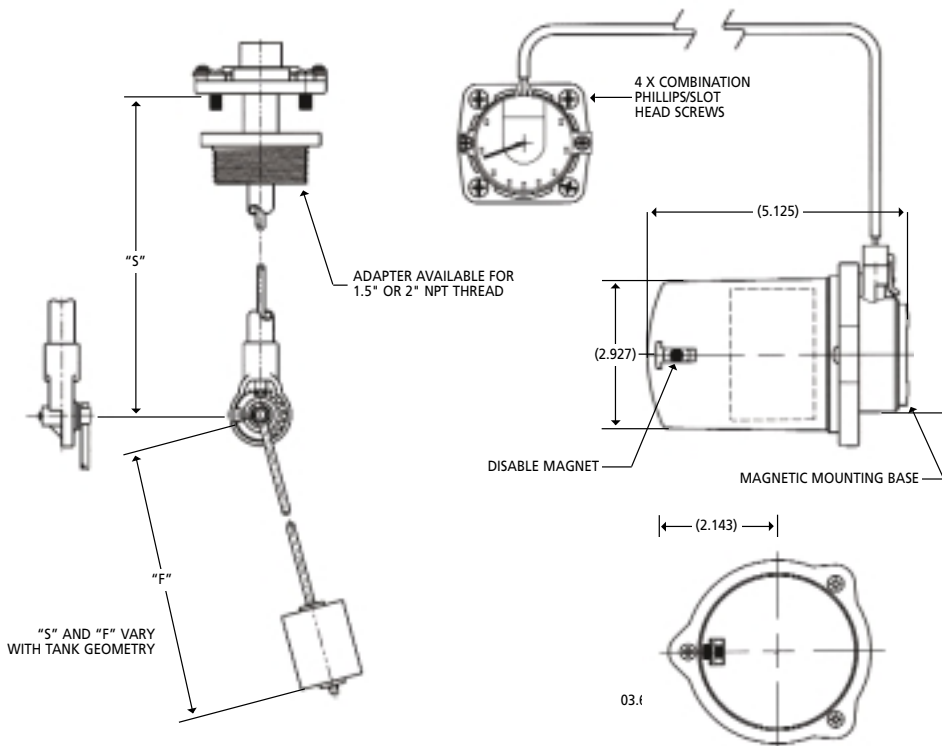
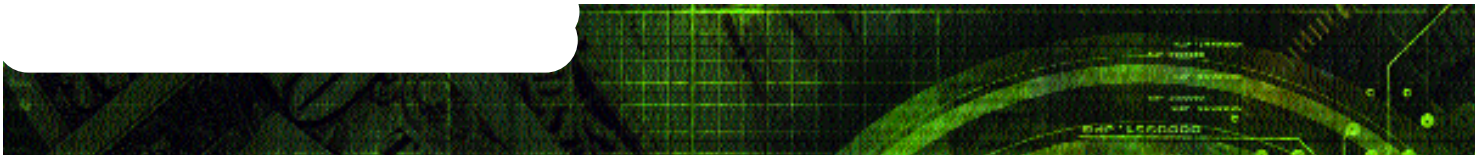
- Unobstructed Range: 1.2 miles
- Obstructed Range: 500 ft.
- 5 year battery life, low battery indicator
- Visual level indicator at tank for local readout
- Temperature range: -40°C to +80°C (-40°F to +176°F)
- Environmentally sealed
- ETL/cETL certified intrinsically safe for use in Class I, Division 1, Group D Hazardous Locations (per ANSI/UL 913 and CAN/CSA C22.2 No.157)
- FCC Part 15 approved
- NEMA 4 enclosure

[Float Monitor:
Proven Performance.]



Exceptional DSSS technology is superior to narrow band systems, resulting in more reliable communications. So advanced, it's already the recipient of many patents, with additional pending.





DIMENSIONS ARE IN INCHES

Float Monitor (Magnetic Liquid Level Sensor Kit) for Vented Tanks															
			0	3	6					36 in. Tank height					
			0	3	8					38 in. Tank height					
			0	4	4					44 in. Tank height					
			0	4	8					48 in. Tank height					
			0	6	0					60 in. Tank height					
			0	6	4					64 in. Tank height					
			0	7	6					76 in. Tank height					
			0	9	6					96 in. Tank height					
			↓							0 2 0	2 in. Mounting adapter				
											0 1 5	1.5 in. Mounting adapter			
			↓							0 2	2 ft. Lead				
											0 5	5 ft. Lead			
C	S	M	<input type="checkbox"/>	<input type="checkbox"/>	<input type="checkbox"/>	P	<input type="checkbox"/>	<input type="checkbox"/>	<input type="checkbox"/>	I	<input type="checkbox"/>	<input type="checkbox"/>	I	0	0

Note: Special Gauge Adapters and Signal Converters are available from Alpha Wireless Automation

ETL Marked Intrinsically Safe apparatus for use in Class I, Division I, Group D applications, conforming to ANSI/UL 913-1988 Standard.

FCC Part 15 Registered: NU9TX0625-0200

This device complies with Part 15 of the FCC rules. Operation is subject to the following two conditions: (1) This device may not cause harmful interference and (2) This device must accept any interference received, including interference that may cause undesired operation.

This device is distributed by Alpha Wireless Automation

Alpha Wireless Automation
 1122 South Robertson Blvd. Suite 8
 Los Angeles, CA 90035
www.RemoteTank.com

Tel: 877-292-8770 or 310-488-4249 Fax: 310-385-7811